



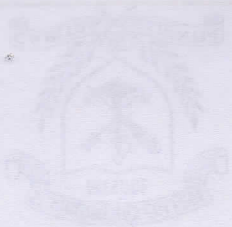
ST. PHILOMENA'S COLLEGE
A College of Excellence (UGC)

CALENDAR

2016-17



Bannimantap, Mysore - 570 015
Autonomous College of the University of Mysore
Accredited by NAAC with 'A' Grade (3.58 CGPA)



College of Excellence
Re-accredited by NAAC with 3.58 CGPA ('A' grade-very good)
Autonomous College of the University of Mysore
St. Philomena's College (Autonomous)
Mysore Diocesan Educational Society (1989)

NATIONAL ANTHEM



Jana Gana Mana Adhinaayak Jaya Hey,
Bhaarat Bhaagya Vidhaataa
Panjaab Sindhu Gujarat Maraatha,
Draavid Utkal Banga
Vindhya Himaachal Yamuna Ganga,
Uchchal Jaladhi Taranga
Tav Shubb Naamey Jaagey,
Tav Shubb Aashish Maange
Gaahey Tav Jayagaathaa
Jana Gana Mangal Daayak,
Jaya Hey Bhaarat Bhaagya Vidhaataa
Jaya Hey, Jaya Hey, Jaya Hey,
Jaya Jaya Jaya, Jaya Hey



ST. PHILOMENA'S COLLEGE

Bannimantap, Mysore - 570 015

A College of Excellence (UGC)

Autonomous College of the University of Mysore

Accredited by NAAC with 'A' Grade (3.58 CGPA)

Tel : 0821-4240900, 4240912, 4240954, 4240951

Fax : 091.821.4240950

Email : stpfilos1946@gmail.com Web: www.stpfilos.in

CALENDAR

2016-17

Name

Class

Group

Roll Number



ST. PHILOMENA'S COLLEGE

(Autonomous College of the University of Mysore)

Mysore - 570 015

Dear Student,

The College appreciates that you have chosen this institution for your studies. In the best interest of the College and parents /guardians, the essential rules and regulations necessary to maintain the rigour of the institution are given in this calendar. The students and parents / guardians are expected to read the rules / regulations.

Vision

The College is guided by the visionary zeal of providing value-based education to everyone irrespective of religion, caste, creed or sex by which the character is formed, intellect is expanded and one can stand on his/her own feet.

Mission

To transform young men and women who come to learn not just from books, but also from life and to share the experience of working and playing together, which inculcates life skills to become good citizens with integrity and discipline.

Aims and Objectives

Striving to optimize opportunities for education, the College constantly reinvigorates the mission and vision statement keeping its essential core strong. It aims to:

- ❖ Continue the pursuit of excellence in the areas of teaching, learning and practical application of knowledge.
- ❖ Facilitate the acquisition of core competencies and channel students towards critical literacy.



- ❖ Forge tenable industry-academia interfaces.
- ❖ Engender ethical values in students.

A BRIEF HISTORY OF THE COLLEGE

St. Philomena's College started in the year 1946 was the first private Science Degree College to be established in the erstwhile Mysore State. The altruism of the then Maharaja of Mysore, Sri Jayachamarajendra Wodeyar and the personal efforts of the then Bishop of Mysore - Rene Feuga, gave a legendary beginning to the institution.

St. Philomena's College has a long history of established academic excellence. Over the years, the College has evolved several programmes, added both at the undergraduate and postgraduate level. The academic environment, student friendly atmosphere and value based education attracts students from several parts of the country and the world. Guiding values such as love, justice, equality and peace are enshrined as institutional objectives. The College is wedded to its zeal of democratising education and aims at social equity. The College constantly strives to evolve conducive and viable practices to transact the curriculum and upgrade the infrastructure.

An assiduous commitment to its core values has helped the institution earn credits such as the A+ Grade from NAAC in May 2004. The College was granted Autonomy by the University Grants Commission in the year 2011. Retaining its rigour, the College secured an A Grade with a CGPA rating of 3.58 points in its second cycle of accreditation in 2014.

The UGC had declared the College as "A college with potential for Excellence" in the year 2010 and in the year 2015 the UGC the elevated the College as "A College of Excellence".

Academic

A fulfilling study of the chosen curriculum is facilitated through a network of various services and infrastructure processed through different levels of

Character is perfectly educated will – Novais



assessment and evaluation. Students are encouraged to leverage their knowledge through practical components of assessment and to develop a base for critical studies in the various subjects of their choice. Research activities are institutionally supported and production of short dissertations is included in the courses in order to inculcate the fundamentals of Research.

Insistence is placed on submission of assignments, dissertations and practical record books. Presentations and defence of papers is introduced to help students develop essential skill sets.

Staff and student bodies are set up to facilitate and organize extra curricular activities through the year. Various associations and clubs provide ample opportunity for students to follow their interests and learn the techniques of management. Students are expected to take membership in at least one of the clubs. Graded points are awarded to respective groups leading to championships.

Character Formation

Development of character is one of the primary goals of education and the College realizes its responsibility in fostering sound citizens who may contribute to nation building. A pronounced emphasis is therefore laid on behaviour, attitude and value enrichment. Qualities such as perseverance, honesty, integrity, tolerance, self-discipline, management strategies, problem solving techniques and amiability are essential to human character. The students are sensitized to value these virtues in our daily interaction and through various events and activities.

The College strives to develop the desired attributes in our graduates and cause a deeper understanding of oneself in the changing world. Students are encouraged to go beyond the prescribed curriculum and initiate independent research. Our mission is to build a student base that would become an agent of change in the society and work towards a secular world.

To Pity distress is but human ; to relieve it is god like – H. Mann.



THE COMMON PURSUIT

Parents and Guardians

The institution holds the dream of improving the lives of students who seek admission. It is also aware of the enormous responsibility that it bears and is conscious of the expectations that are held by its stakeholders. It is in this awareness that springs the need for collaborative strategies. The students and parents / guardians are essential stakeholders need to converge and concur on critical issues in order to build possibilities of an assured future. Hence, it calls for a strong plinth to work from. We appreciate interventions from parents or guardians as and when necessary and propose to build a strong partnership.

Faculty

Persons of merit and experience along with an emerging teaching fraternity hold office with a steadfast concern for education. The faculty is enlightened about its duties and apart from dispensing regular academic responsibilities it grants assistance in counseling and mentoring. Students are encouraged to participate in co-curricular events and offered necessary guidance by the faculty. Exclusive attention is accorded to students who require professional counsel. Parental interventions are sought as and when the need arises. An engaging commitment to quality service is mooted by the College.

Library

The Central Library on the campus is equipped with wide-ranging resources, both print and digital. It is a member of the N-List project supported by Infinitnet Centre, Ahmedabad which affords an access to numerous research and reviewed journals across the streams.

Books may be borrowed on all working days. A Reading Room and Reference Section is also open to students during the working hours. The adjoining section houses the UGC- Resource Network Centre enabled with Computers and Internet connectivity. Reprographic facility is also made available at the library.

Constancy is the complement of all other human virtues –Mazini.



Extra-curricular Activities

There is no students' union in the college. A majority of the students have suggested during the orientation programme conducted at the beginning of the Academic Year that more sports, library and cultural programmes should be conducted for all students and more students should be involved. Students who volunteer will constitute various committees through which these programmes will be conducted.

Lady students should kindly note, that no college function is compulsory after 5 p.m. Parents and Guardians of lady students should ensure that their children/wards don't stay out late under the pretext of college extracurricular activities.

Excursion and Picnics

Generally, the college does not organize any excursions or picnics. Students are forbidden to organize excursions or picnics, without explicit permission from the Principal. Under no circumstances, any excursion, or study tours involving lady students will be permitted unless a senior lady member of the staff accompanies the group.

Sports and Games

We encourage sports and games as per the guidelines given by the Government/University. With special grants from the UGC, a state-of-the-art Indoor Stadium was established. The Director of Physical Education with the assistance of other teachers organizes the Annual Athletic Meet and a number of inter-house competitions. Selections will be made for various college teams and interested students will be trained. It is a matter of pride for all of us, that every year a sizeable number of our students are selected for the University Teams. Please note, sports and games are scheduled after the class hours.

Attendance

Our primary concern is the academic growth of the students. It is mandatory

Silence is sometimes the severest criticism – Charles Buxton.



for all students to attend classes regularly. As per the University Guidelines and also court directives, students who do not attend 75% of the total classes held, cannot appear for the end-semester exams. They will have to repeat the semester. Attendance is updated on a daily basis. All students should take care that they attend the classes regularly. Parents and guardians are expected to keep track of the attendance.

Dress

Ours has been a co-education college from the very beginning. We have students from more than 20 states of India and 19 different countries. In spite of diverse cultures, students should respect the local customs. It is mandatory for all students to dress modestly. Whenever there is violation of dress code, students will be warned by any member of the faculty. If they repeat, they will be asked to seek admission elsewhere.

Tests and Exams

In every semester, there will be an Internal Assessment Test for 40 marks. The students will have to submit assignments for every subject. Besides these, there will be marks for seminars, attendance, projects etc. The Internal Assessment marks are counted for declaring the results of each semester. Students should take the test, assignments, seminars, academic quiz held in the class etc. There is no provision for Internal Assessment marks to be brought forward.

Reports

Teachers feed attendance to the computer on daily basis. Students can check their attendance reports swiping their smart ID cards at the computer kept in the reception. Monthly attendance reports will be displayed on the notice board and reports will be sent to the parents/guardians from time to time. Parents are advised to keep track of the attendance to ensure that they have the required percentage. Those who do not get the required percentage will not be permitted to appear for the final examination.

Defer no time, delays have dangerous ends – William Shakespeare.



Identity Card

Each student is given a smart Identity Card. All students should wear the ID card when they are inside the campus. Students have to swipe the ID card at the machine installed at every entrance, every time they come in or go out. The security personnel at each gate have been asked to monitor this and report to the Principal if any student refuses to swipe. Please cooperate by wearing the ID card. This is the only way to curb the anti-social elements from entering the College campus.

Scholarships and Freshships

Students who wish to claim categories such as SC/ST, minorities, differently abled and other reserved categories can avail information at a section dedicated to related issues at the office. Applications will be forwarded by the College office to the concerned Government Departments. Scholarship/Freshship amount will be transferred directly to the SB accounts of the student by the respective Government Departments.

Certificates

Students should apply for various certificates like Bona Fide Certificate, Study Certificate, T.C etc. in the prescribed form available in the office. Certificate will be issued on the following working day. Please do not demand for these certificates on the same day you submit the application.

Vehicles

Students who bring two wheelers to the College should pay the prescribed fee to the College office and obtain a pass to park the vehicles in the cycle/scooter stand. Students should not park their vehicle in the parking space set apart for the staff. The responsibility of the college ceases one hour after the last period on a working day. Vehicles not collected will be handed over to the police. Please do not park vehicles outside the gate. If parked, the traffic police will be asked to clear them.

Discretion in speech is more than eloquence – Bacon



OTHER PROGRAMMES IN THE COLLEGE

Orientation Programmes

At the beginning of each academic year orientation programmes are conducted for the freshers to expose them to the functioning of the College and also motivate them to participate in various activities.

Campus Ministry

To foster the faith formation of the Catholic students, the College offers the following activities: Jesus Youth Group, Bible Study Group and AICUF. The members of the above group meet once a week. These meetings are geared towards developing and strengthening Christian ideals, leadership and deepen their spirituality.

Eucharistic Celebration

At the beginning of each year an Inaugural Mass is celebrated. Besides Eucharistic celebrations on various occasions, a Thanksgiving Mass is also offered at the end of the academic year.

The Annual Retreat

Opportunities are provided for Catholic students to make a retreat during the course of the academic year. All Catholic students are expected to attend the retreat.

Religious Instruction Classes

All Catholic students should attend the religious instruction classes conducted regularly.

COLLEGE REGULATIONS

Whenever many individuals live together, discipline is necessary and this is especially true of an institution for the education of youth. This discipline is formative and not repressive. It enables the student to practise and develop self discipline which is essential for a well-ordered and successful life. St. Philomena's

If at first you don't succeed, try, try, try again - William E. Hickson



College wants students to adhere to all rules and regulations intended to benefit the institution as well as the individual student.

- ☞ Students should wear the Identity Card while on campus. The card should be shown to any member of the Staff or College Officials when asked for, especially when dealing with the Office and Library.
- ☞ The bell for class is given five minutes before the commencement of classes. Students should be in their respective class rooms before the second bell.
- ☞ Students should maintain complete silence in the corridors during class hours. Students must not crowd the corridors during class hours or otherwise.
- ☞ No student is allowed to leave the lecture hall without the teacher's permission or until the class is dismissed.
- ☞ If the concerned teacher is on leave, students should go to the library.
- ☞ Students must observe punctuality. At the discretion of the teacher a student may be permitted to enter the class room if he/she is more than 10 minutes late for the first hour. However, if a student is regularly late for classes he/she may not be permitted to attend classes.
- ☞ Students are forbidden to sit on the steps of any building at any time of the day.
- ☞ The corridors, the auditorium steps, library stair way, open air theatre, place around the canteen, and the library block are not meant for assemblies. Please treat them as silent zone.
- ☞ Students are not permitted to smoke in the college campus. They are liable to disciplinary action if found smoking in the campus.
- ☞ Destroying college property, furniture, lab equipment or defacing walls are serious offences. The class rooms should be kept neat and tidy.
- ☞ Ragging is a cognizable offence and those who indulge in it or encourage it will be handed over to law as per G.O Ed 122UEC 96 dated 16-01-97.
- ☞ Disciplinary action will be taken against any student found in possession of, or under the influence of drugs and alcohol.

In the middle of difficulty, lies opportunity - Albert Einstein.



- ☞ Students are forbidden from bringing weapons or firecrackers to the campus.
- ☞ In subordination, habitual inattention, neglect of work, un-becoming language or conduct, obscenity in word or deed render a student liable to temporary or permanent dismissal.
- ☞ Do not instigate indiscipline by violence, groupism, class clashes etc by your words, slogans or behaviour.
- ☞ Never attempt to settle scores with your companions. Principal or Staff members by intimidation or assault.
- ☞ Boys and girls are expected to conduct themselves with decorum.
- ☞ No outdoor games are allowed during class hours (Monday to Friday 9.30 a.m to 4.30 p.m and on Saturday 9.30 a.m to 1.30 p.m)
- ☞ No picnics or excursions can be organized or any type of contributions/subscriptions made without the explicit permission of the Principal.
- ☞ Bringing mobile phones to the campus is forbidden as per the order of the Department of Collegiate Education. If a student is found using a mobile phone, it will be confiscated and not returned.

PLEASE NOTE

- ☞ Students breaking the above rules will be suspended immediately and if found guilty, after due inquiry will be dismissed from the College. The College, though not responsible for the conduct of the students outside the campus will take cognizance of any serious misconduct.
- ☞ You will understand that ours is a shared task in extending the bounds of your knowledge and in creating in you a broad-minded vision of life.
- ☞ We welcome you to the College with the confidence that you will live up to the ideals of St. Philomena's College and co-operate fully with the faculty/staff and the authorities of the College in the ongoing process of your education.

We do not remember days; we remember moments – Cesare Pavese



ಸಂತ ಫಿಲೋಮಿನಾ ಕಾಲೇಜು (ಸ್ವಾಯತ್ತ)

ಮೈಸೂರು

ಪ್ರಿಯ ವಿದ್ಯಾರ್ಥಿ,

ಸಂತ ಫಿಲೋಮಿನಾ ಕಾಲೇಜಿಗೆ ಅದರದ ಸ್ವಾಗತ, ನಮ್ಮ ಸಂಸ್ಥೆಯ ಸಂಕ್ಷಿಪ್ತ ಮಾಹಿತಿ ಮತ್ತು ನಿಯಮಾವಳಿಗಳನ್ನು ಇಲ್ಲಿ ಕೊಡಲಾಗಿದೆ. ಶ್ರದ್ಧೆಯಿಂದೊದಿ ತಿಳಿದುಕೊಳ್ಳಿ, ಮಾತಾಪಿತರಿಗೆ/ಹಿರಿಯರಿಗೆ ತಿಳಿಸಿ.

ಧೈಯ

ನಮ್ಮ ಕಾಲೇಜಿನ ಧೈಯ "ವಿದ್ಯೆಯ ಮುಖೇನ ಪ್ರೇಮ (ದರ್ಶನ)" (CARITAS IN SCIENTIA). ಈ ಧೈಯಕ್ಕೆ ಸುಗುಣವಾಗಿ ಯಾವುದೇ ಜಾತಿ, ಭಾಷೆ ಮತ್ತು ಆರ್ಥಿಕ ಸ್ಥಿತಿಯ ಭೇದವಿಲ್ಲದೆ ವಿದ್ಯಾರ್ಥಿಗಳಿಗೆ ಸಮಾನವಾದ ಶಿಕ್ಷಣ ನೀಡುತ್ತಾ ಬಂದಿದ್ದು, ನ್ಯಾಕ್ ಸಂಸ್ಥೆಯು ಆ ಧೈಯವನ್ನು ಗುರುತಿಸಿರುವುದು ಕಾಲೇಜಿನ ಇತಿಹಾಸದ ಒಂದು ಪ್ರಮುಖ ಘಟ್ಟವಾಗಿದೆ.

ಎಪ್ಪತ್ತು ವರ್ಷಗಳಿಂದ ಈ ಕಾಲೇಜು ಅಸ್ತಿತ್ವದಲ್ಲಿದೆ. ವಿಶಾಲ ಕೊಠಡಿಗಳು, ಪ್ರಯೋಗಾಲಯಗಳು, ವಾಚನಾಲಯ, ಗ್ರಂಥಭಂಡಾರ, ಆಟದ ಬಯಲು ಮತ್ತು ಇಲ್ಲಿನ ಪರಿಸರ ಉತ್ತಮ ವಿದ್ಯಾರ್ಜನೆಗೆ ಪೂರಕವಾಗಿದ್ದು, ಇಲ್ಲಿ ಸಾಕಷ್ಟು ಆಗತ್ಯ ಸೌಕರ್ಯಗಳನ್ನು ಒದಗಿಸಿದ್ದೇವೆ. ಇವುಗಳ ಮಟ್ಟವನ್ನು ಕಾಪಾಡಲು ಸಹಕರಿಸಿ.

ಕಾಲೇಜಿನ ಪ್ರವೇಶ ಪಡೆಯುವ ಮುನ್ನ ಇವು ನಿಮಗೆ ಸಮರ್ಪಕವಾಗಿವೆ ಎಂಬುದರ ಬಗ್ಗೆ ಅಶ್ವಾಸನೆ ಕೊಟ್ಟಿದ್ದೀರಿ.

ಬೋಧಕ ಸಿಬ್ಬಂದಿ

ನಮ್ಮಲ್ಲಿನ ಬೋಧಕ ಸಿಬ್ಬಂದಿ ತಮ್ಮ ತಮ್ಮ ಪಠ್ಯ ವಿಷಯಗಳಲ್ಲಿ ಅನುಭವಸ್ಥರು ಮತ್ತು ಪರಿಣಿತರು. ನಿಮಗೆ ಬೇಕೆನಿಸಿದಾಗ ಅವರನ್ನು ಸಂಬಂಧಪಟ್ಟ ವಿಭಾಗಗಳಲ್ಲಿ ಸಂಪರ್ಕಿಸಿ, ಅವರ ಸಲಹೆ ಮತ್ತು ನಿರ್ದೇಶನ ಪಡೆಯಲು ಹಿಂಜರಿಯದಿರಿ.

ದಯವಿಟ್ಟು ಗಮನಿಸಿ: ನಮ್ಮ ಕಾಲೇಜಿನ ಖಾಯಂ ಅಥವಾ ತಾತ್ಕಾಲಿಕ ಬೋಧಕ ಸಿಬ್ಬಂದಿಯವರಿಂದ ಮನೆ ಪಾಠ ಹೇಳಿಕೊಳ್ಳುವುದನ್ನು ನಿಷೇಧಿಸಿದೆ.

A day without laughter is a day wasted – Charlie Chaplin



ಗ್ರಂಥ ಭಂಡಾರ

ಸುಮಾರು 40,000 ಅಮೂಲ್ಯ ಪುಸ್ತಕಗಳನ್ನು ಸುಸಜ್ಜಿತ ಗ್ರಂಥ ಭಂಡಾರ ನಮ್ಮ ಕಾಲೇಜಿನಲ್ಲಿದೆ. ಇ-ಸಂಪನ್ಮೂಲ ಪ್ರಾಜೆಕ್ಟ್‌ನ ಸದಸ್ಯತ್ವ ಹೊಂದಿದೆ. ಅದನ್ನು ಸದುಪಯೋಗಪಡಿಸಿಕೊಳ್ಳಿ. ವಾಚನಾಲಯ ಕಾಲೇಜಿನ ಸಮಯದಲ್ಲಿ ತೆರೆದಿರುತ್ತದೆ. ಕೆಲಸದ ದಿನಗಳಲ್ಲಿ ಪುಸ್ತಕಗಳನ್ನು ಪಡೆಯಬಹುದು. ಗ್ರಂಥ ಭಂಡಾರದ ಸುತ್ತಮುತ್ತ ಮೌನ ಪರಿಸರ. ಅದರ ಮೆಟ್ಟಿಲುಗಳ ಮೇಲೆ, ವರಾಂಡದಲ್ಲಿ ಕುಳಿತುಕೊಳ್ಳುವುದು, ಹರಟೆ ಹೊಡೆಯುವುದು, ಹಾದು ಹೋಗುವವರನ್ನು ಚುಡಾಯಿಸುವುದು ನಿಷಿದ್ಧ.

ಪಠ್ಯೇತರ ಚಟುವಟಿಕೆಗಳು

ಕಾಲೇಜಿನಲ್ಲಿ ವಿದ್ಯಾರ್ಥಿ ಸಂಘ ಇರುವುದಿಲ್ಲ. ಹಿಂದಿನ ಶೈಕ್ಷಣಿಕ ವರ್ಷದ ಆರಂಭದಲ್ಲಿ, ವಿದ್ಯಾರ್ಥಿಗಳಿಗಾಗಿ ನಡೆಸಿದ ಪುನರ್‌ಮನನ ಕಾರ್ಯಕ್ರಮದಲ್ಲಿ ವಿದ್ಯಾರ್ಥಿಗಳೇ ಸಲಹೆ ನೀಡಿದಂತೆ ಕಾಲೇಜಿನಲ್ಲಿ ವಿವಿಧ ಸಮಿತಿಗಳನ್ನು ರಚಿಸಿ ಅವುಗಳ ಆಶ್ರಯದಲ್ಲಿ ವಿವಿಧ ಪಠ್ಯೇತರ ಮತ್ತು ಪಠ್ಯಪುರಕ ಚಟುವಟಿಕೆಗಳನ್ನು ನಡೆಸಲಾಗುತ್ತದೆ. ಈ ಸಮಿತಿಗಳಲ್ಲಿ ವಿದ್ಯಾರ್ಥಿಗಳೂ ಪಾಲ್ಗೊಳ್ಳಲು ಅವಕಾಶವಿದೆ. ವಿದ್ಯಾರ್ಥಿಗಳು ಈ ಅವಕಾಶವನ್ನು ಸದುಪಯೋಗಪಡಿಸಿಕೊಂಡು ತಮ್ಮ ವ್ಯಕ್ತಿತ್ವ ವಿಕಾಸ ಮಾಡಿಕೊಳ್ಳುವುದು ಒಳ್ಳೆಯದು.

ವಿದ್ಯಾರ್ಥಿನಿಯರು ಮುಖ್ಯವಾಗಿ ಗಮನಿಸಬೇಕು

ಸಂಜೆ 5 ಘಂಟೆಯ ನಂತರ ಕಾಲೇಜಿನ ಯಾವುದೇ ಸಮಾರಂಭ ಕಡ್ಡಾಯವಲ್ಲ. ಕಾಲೇಜಿನ ಪಠ್ಯೇತರ ಚಟುವಟಿಕೆಗಳ ನೆಪದಲ್ಲಿ ವಿದ್ಯಾರ್ಥಿನಿಯರು ಸಂಜೆಯಲ್ಲಿ ವಿಳಂಬವಾಗಿ ಕಾಲೇಜಿನಲ್ಲಿ ರದಂತೆ ಮಾತಾಪಿತರು ಪೋಷಕರು / ಗಮನಿಸಬೇಕು.

ಪ್ರವಾಸ ವಿವರಗಳು

ಕಾಲೇಜು ಯಾವುದೇ ಪ್ರವಾಸವನ್ನು ಏರ್ಪಡಿಸುವುದಿಲ್ಲ. ಪ್ರಾಂಶುಪಾಲರ ನಿರ್ದಿಷ್ಟ ಅನುಮತಿ ಪಡೆಯದೆ ವಿದ್ಯಾರ್ಥಿಗಳು ಪ್ರವಾಸಗಳನ್ನು ಏರ್ಪಡಿಸಬಾರದು. ಯಾವುದೇ ಸಂದರ್ಭದಲ್ಲಿ ಅನುಭವಿ ಹಿರಿಯ ಉಪನ್ಯಾಸಕಿಯೊಬ್ಬರು ಜೊತೆಗಿರದಿದ್ದರೆ ವಿದ್ಯಾರ್ಥಿನಿಯರ ಯಾವುದೇ ಶೈಕ್ಷಣಿಕ ಪ್ರವಾಸಕ್ಕೆ ಅನುಮತಿ ಕೊಡುವುದಿಲ್ಲ.

Memory..... is the diary that we all carry about with us - Oscar Wilde.



ಆಟೋಟೆಗಗಳು

ಸರ್ಕಾರ ಹಾಗೂ ವಿಶ್ವವಿದ್ಯಾನಿಲಯ ವಿಧಿಸಿರುವ ನಿಯಮಾನುಸಾರ ಆಟೋಟೆಗಗಳ ಸ್ಪರ್ಧೆಗಳನ್ನು ನಾವು ಪ್ರೋತ್ಸಾಹಿಸುತ್ತೇವೆ. ಇದಕ್ಕಾಗಿ ನಮಗೆ ಯಾವುದೇ ಸಹಾಯಧನ ಸಿಗುತ್ತಿಲ್ಲ. ಕಾಲೇಜಿನ ಪಾಠದ ವೇಳೆಯಲ್ಲಿ ಯಾವುದೇ ಆಟೋಟೆಗಗಳನ್ನು ಏರ್ಪಡಿಸಬಾರದು.

ಹಾಜರಾತಿ

ವಿದ್ಯಾರ್ಥಿಗಳು ಎಲ್ಲಾ ತರಗತಿಗಳಿಗೆ ಹಾಜರಾಗುವುದು ಅತ್ಯಾವಶ್ಯಕ. ಮೈಸೂರು ವಿಶ್ವವಿದ್ಯಾನಿಲಯ ವಿದ್ಯಾರ್ಥಿಗಳ ಹಾಜರಾತಿಯ ಬಗ್ಗೆ ನಿರ್ದಿಷ್ಟ ನಿಯಮಗಳನ್ನು ಮಾಡಿದೆ. ಪ್ರತಿ ವಿಷಯದಲ್ಲಿ ಕನಿಷ್ಠ 75% ಹಾಜರಾತಿ ಇರಬೇಕು. ಇದರಲ್ಲಿ ಪ್ರಾಂಶುಪಾಲರ ಪಾತ್ರ ಸೀಮಿತ. ಹಾಜರಾತಿಯನ್ನು ಪ್ರತಿ ವಿಷಯದಲ್ಲಿ ತೆಗೆದುಕೊಂಡಿರುವ ತರಗತಿಗಳನ್ನುವು ಅವಲಂಬಿಸಿ ನಿರ್ಧರಿಸಲಾಗುವುದು. ವಿಶ್ವವಿದ್ಯಾನಿಲಯದ ನಿಯಮಗಳ ಪ್ರಕಾರ, ಎಲ್ಲ ವಿದ್ಯಾರ್ಥಿಗಳಿಗೂ ಪ್ರತಿ ವಿಷಯದಲ್ಲಿ ಶೇ 75 ರಷ್ಟು ಹಾಜರಾತಿ ಇರಬೇಕು. ವೈದ್ಯಕೀಯ ಅಥವಾ ಅನ್ಯಕಾರಣಗಳಿಂದ ಹಾಜರಾತಿಯ ವಿನಾಯಿತಿ ಇರುವುದಿಲ್ಲ. ಪ್ರಾಂಶುಪಾಲರ ಅನುಮತಿ ಪಡೆದು ಕ್ರೀಡೆ ಅಥವಾ ಸಾಂಸ್ಕೃತಿಕ ಸ್ಪರ್ಧೆಗಳಲ್ಲಿ ಕಾಲೇಜಿನ ಪ್ರತಿನಿಧಿಯಾಗಿ ಭಾಗವಹಿಸಿದರೆ, ಆ ನಿರ್ದಿಷ್ಟ ದಿನಗಳಿಗೆ ಮಾತ್ರ ಹಾಜರಾತಿ ನೀಡಲಾಗುವುದು. ಹಾಜರಾತಿ ವಿನಾಯಿತಿ ನೀಡುವ ಅಧಿಕಾರವನ್ನು ವಿಶ್ವವಿದ್ಯಾನಿಲಯವು ಹಿಂತೆಗೆದುಕೊಂಡಿದೆ. ವಿದ್ಯಾರ್ಥಿಗಳ ಅನುಕೂಲಕ್ಕಾಗಿ ಮಾಸಿಕ ಹಾಜರಾತಿ ವರದಿಯನ್ನು ವಿದ್ಯಾರ್ಥಿಗಳಿಗೆ ನೀಡಲಾಗುವುದು. ವಿದ್ಯಾರ್ಥಿಗಳು ತಮ್ಮ ಹಾಜರಾತಿಯ ಬಗ್ಗೆ ಗಂಭೀರವಾಗಿ ಗಮನಿಸಿ, ಹಾಜರಾತಿ ಕಡಿಮೆ ಇದ್ದಲ್ಲಿ, ಅಂತ್ಯದಲ್ಲಿ ಪಶ್ಚಾತ್ತಾಪ ಪಡುವುದಕ್ಕೆ ಬದಲಾಗಿ, ತರಗತಿಗಳಿಗೆ ಹಾಜರಾಗಿ ಸರಿಪಡಿಸಿಕೊಳ್ಳಲು ಪ್ರಯತ್ನಿಸಬೇಕು. ಶೇ. 75 ಹಾಜರಾತಿ ಇಲ್ಲದಿದ್ದರಲ್ಲಿ ಸ್ವಾಯತ್ತ ಅಂತಿಮ ಪರೀಕ್ಷೆಗೆ ಹಾಜರಾಗಲು ಸಾಧ್ಯವಿಲ್ಲ ಮತ್ತು ಮುಂದಿನ ಶೈಕ್ಷಣಿಕ ವರ್ಷದಲ್ಲಿ ಅದೇ ಸೆಮಿಸ್ಟರ್‌ಗೆ ಪುನಃ ಪ್ರವೇಶ ಪಡೆಯಬೇಕಾಗುತ್ತದೆ.

ಉಡುಪು

ಇಲ್ಲಿಯ ಸಾಮಾಜಿಕ ಸಂಪ್ರದಾಯಕ್ಕೆನುಗುಣವಾಗಿ ವಿದ್ಯಾರ್ಥಿಗಳು ಸರಳ ಹಾಗೂ ಸಭ್ಯ ಉಡುಪು ಧರಿಸಬೇಕು.

Sometimes you succeed... and other times you learn - Robert Kiyosaki.



ಪರೀಕ್ಷೆಗಳು

ಎಲ್ಲಾ ತರಗತಿಗಳ ವಿದ್ಯಾರ್ಥಿಗಳಿಗೆ ಪ್ರತಿ ಸೆಮಿಸ್ಟರ್‌ನಲ್ಲಿ ಲಘು ಪರೀಕ್ಷೆಗಳಿರುವುದು. ಈ ಪರೀಕ್ಷೆಗಳಿಗೆ ಗೈರು ಹಾಜರಾದವರಿಗೆ ಅಂತರಿಕ ಮೌಲ್ಯಮಾಪನ ಅಂಕಗಳನ್ನು ನೀಡಲಾಗುವುದಿಲ್ಲ.

ವಿದ್ಯಾರ್ಥಿಗಳ ಪ್ರಗತಿಯ ವರದಿ

ವಿದ್ಯಾರ್ಥಿಗಳ ಹಾಜರಾತಿ ಮತ್ತು ಕಾಲೇಜು ಪರೀಕ್ಷೆಗಳಲ್ಲಿ ಪಡೆದ ಅಂಕಗಳ ವರದಿಯನ್ನು ಮಾತಾಪಿತರ ವಿಳಾಸಕ್ಕೆ ಅಗಿಂದಾಗ್ಗೆ ಅಂಚೆ ಮೂಲಕ ಕಳುಹಿಸಲಾಗುವುದು. ವರದಿಗಳು ಸಿಗದಿದ್ದರೆ ಮಾತಾಪಿತರು /ಪೋಷಕರು ಪ್ರಾಂಶುಪಾಲರನ್ನು ಸಂಪರ್ಕಿಸಬೇಕು. ಮಾತಾಪಿತರು / ಪೋಷಕರು ಅಗಿಂದಾಗ್ಗೆ ಬಂದು ವಿದ್ಯಾರ್ಥಿಗಳ ಪ್ರಗತಿಯ ಬಗ್ಗೆ ಪ್ರಾಂಶುಪಾಲರಿಂದ ತಿಳಿಯುವುದು ಸೂಕ್ತ. ನಿಮ್ಮ ವಿಳಾಸದಲ್ಲಿ ಬದಲಾವಣೆ ಇದ್ದರೆ ತಕ್ಷಣ ಪ್ರಾಂಶುಪಾಲರ ಗಮನಕ್ಕೆ ತರಬೇಕು.

ಗುರುತಿನ ಚೀಟಿ

ಈ ಕಾಲೇಜಿಗೆ ಪ್ರವೇಶ ಪಡೆದ ಪ್ರತಿಯೊಬ್ಬ ವಿದ್ಯಾರ್ಥಿಗೆ ಅವರ ಭಾವಚಿತ್ರ ಹೊಂದಿದ ಗುರುತಿನ ಚೀಟಿಗಳನ್ನು ಕೊಡಲಾಗುವುದು. ಕಾಲೇಜಿಗೆ ಬರುವಾಗಲೆಲ್ಲಾ ಆ ಗುರುತಿನ ಚೀಟಿ ಅವರೊಡನೆ ಇರಬೇಕು ಮತ್ತು ಕಾಲೇಜಿನ ಸಿಬ್ಬಂದಿಯವರು ಕೆಳವಾಗಿ ತೋರಿಸಬೇಕು. ಗುರುತಿನ ಚೀಟಿಯಲ್ಲದೆ ಕಾಲೇಜಿನ ಕಛೇರಿಯಲ್ಲಿ ನಿಮ್ಮ ಯಾವುದೇ ಕೋರಿಕೆ ನೆರವೇರುವುದಿಲ್ಲ. ಗುರುತಿನ ಚೀಟಿ ಇಲ್ಲದೆ ತರಗತಿಗಳಿಗೂ ಸೇರಿಸಲಾಗುವುದಿಲ್ಲ.

ಶುಲ್ಕ

ಪ್ರತಿವರ್ಷ ಜಾತಿಗೆ ಸೇರಿದ ಹಾಗೂ ಕಡಿಮೆ ಆದಾಯ ಗುಂಪಿಗೆ ಸೇರಿದ ವಿದ್ಯಾರ್ಥಿಗಳು ಕಾಲೇಜಿಗೆ ಪ್ರವೇಶ ಪಡೆಯುವಾಗ ಶುಲ್ಕದಲ್ಲಿ ರಿಯಾಯಿತಿ ಪಡೆದಿದ್ದಲ್ಲಿ, ಸರಕಾರದಿಂದ ದೊರಕುವ ವಿದ್ಯಾರ್ಥಿವೇತನಕ್ಕೆ ಕಾಲೇಜಿನ ಮುಖಾಂತರ ಅರ್ಜಿ ಸಲ್ಲಿಸಬೇಕು. ಸರಕಾರದಿಂದ ಇವರ ವಿದ್ಯಾರ್ಥಿವೇತನದ ಅರ್ಜಿಯು ತಿರಸ್ಕೃತವಾದಲ್ಲಿ, ರಿಯಾಯಿತಿ ಪಡೆದ ಶುಲ್ಕದ ಮೊಬಲಗನ್ನು ಕಟ್ಟಬೇಕು.

Humor is mankind's greatest blessing - Mark Twain



ವಿದ್ಯಾರ್ಥಿ ವೇತನ ಶುಲ್ಕ ವಿನಾಯಿತಿ

ಎಲ್ಲ ವಿದ್ಯಾರ್ಥಿ ವೇತನ ಮತ್ತು ಶುಲ್ಕ ವಿನಾಯಿತಿಗಳಿಗೆ, ತರಗತಿ ಹಾಜರಾತಿ, ಒಳ್ಳೆಯ ನಡವಳಿಕೆ ಮತ್ತು ಉತ್ತಮ, ನಿರಂತರ ಪ್ರಗತಿ ಅತ್ಯಾವಶ್ಯಕ. ಕನಿಷ್ಠ ಹಾಜರಾತಿ ಇಲ್ಲದ ಮತ್ತು ಅಂತಿಮ ಪರೀಕ್ಷೆಯ ಎಲ್ಲಾ ವಿಷಯಗಳಲ್ಲಿ ಕನಿಷ್ಠ ಎರಡನೆಯ ಶ್ರೇಣಿಯಲ್ಲಿ ತೇರ್ಗಡೆಯಾಗದ ಯಾವುದೇ ವಿದ್ಯಾರ್ಥಿಗೆ, ವಿದ್ಯಾರ್ಥಿವೇತನ ಅಥವಾ ಶುಲ್ಕ ವಿನಾಯಿತಿ ನೀಡಲಾಗುವುದಿಲ್ಲ.

ಸರ್ಟಿಫಿಕೇಟುಗಳು

ಮೈಸೂರು ವಿಶ್ವವಿದ್ಯಾನಿಲಯದ ಆದೇಶದಂತೆ ಪದವಿ ವಿದ್ಯಾರ್ಥಿಗಳ ವರ್ಗಾವಣಾ ಪ್ರಮಾಣಪತ್ರವನ್ನು ಅವರು ವ್ಯಾಸಂಗವನ್ನು ಮುಂದುವರಿಸುವ ಸಂಸ್ಥೆಗೆ ನೇರವಾಗಿ ಕಳುಹಿಸಲಾಗುವುದು. ನಡತೆಯ ಪ್ರಮಾಣಪತ್ರವನ್ನು ವರ್ಗಾವಣಾ ಪತ್ರದೊಡನೆ ಕೊಡಲಾಗುವುದು. ಕಛೇರಿಯಿಂದ ಯಾವುದೇ ಸರ್ಟಿಫಿಕೇಟ್ ಬೇಕಾದಲ್ಲಿ ಎರಡು ದಿನಗಳಿಗೆ ಮುಂಚಿತವಾಗಿ ಅರ್ಜಿ ಸಲ್ಲಿಸಬೇಕು. ಅಂಚೆಯ ಮೂಲಕ ಕಳುಹಿಸಬೇಕಾದರೆ, ನೋಂದಾಯಿತ ಅಂಚೆಯ ಪೆಚ್ಚವನ್ನು ತೆರಬೇಕು.

ಸೈಕಲ್‌ಗಳು ಮತ್ತು ವಾಹನಗಳು

ಎಲ್ಲಾ ವಾಹನಗಳನ್ನು ಪೂರ್ವದ ಗೇಟಿನಿಂದ ಒಳ ತಂದು ಅಲ್ಲಿರುವ ಸೈಕಲ್ ಸ್ಟಾಂಡ್‌ನಲ್ಲಿ ತಿಳಿಸಿ ನಿಂದ ಸಲ್ಲಿಸಬೇಕು. ತರಗತಿಯ ಸಮಯದಲ್ಲಿ ಅವುಗಳನ್ನು ಕಾಲೇಜಿನ ಅವರಣದೊಳಗೆ ತರುವುದನ್ನು ನಿಷೇಧಿಸಿದೆ. ಗೇಟುಗಳ ಮುಂದೆ ಅವುಗಳನ್ನು ನಿಲ್ಲಿಸಕೂಡದು. ತರಗತಿಯ ಮುಗಿದ ಅರ್ಧ ಗಂಟೆಯೊಳಗಡೆ ಸೈಕಲ್ ಸ್ಟಾಂಡಿನಿಂದ ಹೊರತೆಗೆಯದ ವಾಹನಗಳಿಗೆ ನಾವು ಜವಾಬ್ದಾರರಲ್ಲ.

ನಿಯಮ ಕಟ್ಟಳೆಗಳು

ಈ ಕೆಳಗಿನ ನಿಯಮ ಕಟ್ಟಳೆಗಳನ್ನು ಗಮನವಿಟ್ಟು ಓದಿ ವರ್ಷ ಪೂರ್ತಿ ಅವುಗಳ ಪ್ರಕಾರ ನಡೆಯಬೇಕೆಂದು ಕೋರಿಕೆ.

೧ ರ್ಯಾಗಿಂಗ್ ಮತ್ತು ಚುಡಾಯಿಸುವುದನ್ನು ನಿಷೇಧಿಸಲಾಗಿದೆ.

೨ ಕಾಲೇಜಿನ ಕಟ್ಟಡ, ಮರಮುಟ್ಟು, ಪ್ರಯೋಗಾಲಯದ ಉಪಕರಣಗಳನ್ನು ಧ್ವಂಸ

Let food be thy medicine and medicine be thy food - Hippocrates.



ಮಾಡುವುದು, ಬೆಂಚು, ಕುರ್ಚಿ, ಗೋಡೆಗಳ ಮೇಲೆ ಗೀಚುವುದು ಇವೆಲ್ಲಾ ಗಂಭೀರ ಅಪರಾಧಗಳು.

ಕಾಲೇಜಿನ ಯಾವುದೇ ಕಟ್ಟಡದ ಮೆಟ್ಟಿಲುಗಳ ಮೇಲೆ ಕುಳಿತುಕೊಳ್ಳುವುದನ್ನು ನಿಷೇಧಿಸಲಾಗಿದೆ.

ಗ್ರಂಥ ಭಂಡಾರದ ಮೆಟ್ಟಿಲುಗಳು, ಸಭಾಂಗಣದ ಮೆಟ್ಟಿಲು, ಬಯಲು ರಂಗಮಂಟಪ ಮತ್ತು ಕ್ಯಾಂಟೀನಿನ ಸುತ್ತ ಮುತ್ತ ಸಭೆ ಸಂವಾದಗಳಿಗೆ ತಾಣವಲ್ಲ. ಅವುಗಳನ್ನು ಮೌನವಲಯವೆಂದು ದಯವಿಟ್ಟು ಪರಿಗಣಿಸಿ.

ತರಗತಿ ಒಳಗಡೆಯಾಗಲೀ, ಕಾಲೇಜಿನ ಆವರಣದಲ್ಲಿಯಾಗಲೀ ಅಶಿಸ್ತಿಗೆ ಕರೆಕೊಡಬೇಡಿ.

ತರಗತಿಗಳು ನಡೆಯುತ್ತಿರುವಾಗ ವಿದ್ಯಾರ್ಥಿಗಳು ತರಗತಿಗಳ ಹೊರಗಡೆ ಸುತ್ತಾಡುತ್ತಿರುವುದು ಅಲ್ಲಲ್ಲಿ ಕುಳಿತಿರುವುದು ತಪ್ಪು. ಉಪನ್ಯಾಸಕರು ಗೈರು ಹಾಜರಾದಾಗ ಗ್ರಂಥ ಭಂಡಾರದಲ್ಲಿ ಅಥವಾ ವಾಚನಾಲಯದಲ್ಲಿ ಸಮಯ ಸದುಪಯೋಗಪಡಿಸಿಕೊಳ್ಳುವ ಪ್ರವೃತ್ತಿ ಬೆಳೆಸಿಕೊಳ್ಳಿ.

ವಿದ್ಯಾರ್ಥಿಗಳನ್ನು ಗುಂಪುಗಾರಿಕೆ, ಘೋಷಣೆ, ಭಾಷಣ ಅಥವಾ ನಡತೆಯಿಂದ ಅಶಿಸ್ತಿಗೆ ಪ್ರೋತ್ಸಾಹಿಸುವುದು ಮಹಾಪರಾಧ.

ಮದ್ಯ ಪಾನೀಯಗಳನ್ನು, ಮಾದಕ ದ್ರವ್ಯಗಳನ್ನು, ಪಟಾಕಿಗಳನ್ನು ಮತ್ತು ಮಾರಕ ಆಯುಧಗಳನ್ನು ಕಾಲೇಜಿನ ಆವರಣದಲ್ಲಿ ಹೊಂದಿರುವುದು ಮತ್ತು ಉಪಯೋಗಿಸುವುದು ಮಹಾಪರಾಧ.

ನಿಮ್ಮ ಸಹಪಾಠಿಗಳ, ಪ್ರಾಂಶುಪಾಲರ, ಶಿಕ್ಷಕ ಅಥವಾ ಶಿಕ್ಷಕೇತರ ಸಿಬ್ಬಂದಿಯವರ ಜೊತೆ ವಾದ ವಿವಾದವನ್ನು ಮಾಡುವುದು, ಅವರ ಮೇಲೆ ಹಲ್ಲೆ ನಡೆಸುವುದು ಅಶಿಸ್ತಿನ ನಡತೆ.

ತರಗತಿಗಳು ನಡೆಯುತ್ತಿರುವಾಗ ಕಾಲೇಜಿನ ಆವರಣದಲ್ಲಿ ಯಾವುದೇ ಆಟ ಓಟಗಳು ನಿಷಿದ್ಧ.

ನಿಮ್ಮ ಗುರುತಿನ ಚೀಟಿಯನ್ನು ಯಾವಾಗಲೂ ನಿಮ್ಮೊಡನೆ ಹೊಂದಿರಬೇಕು.

Tis an ill cook that cannot lick his own fingers – William Shakespare



ಪ್ರಾಂಶುಪಾಲರ ನಿರ್ದಿಷ್ಟ ಅನುಮತಿ ಇಲ್ಲದೆ ಪ್ರವಾಸಗಳನ್ನು ಏರ್ಪಡಿಸುವುದು ಅಥವಾ ಇತರರಿಂದ ಹಣ ಸಂಗ್ರಹಿಸುವುದು ತಪ್ಪು.

ಕಾಲೇಜಿನಲ್ಲಿ ಮೊಬೈಲ್ ಫೋನ್‌ಗಳನ್ನು ಸಂಪೂರ್ಣವಾಗಿ ನಿಷೇಧಿಸಲಾಗಿದೆ. ಮೊಬೈಲ್ ಫೋನ್‌ಗಳನ್ನು ಉಪಯೋಗಿಸಿದಲ್ಲಿ ಅವುಗಳನ್ನು ಸ್ವಾರ್ಥೀಯತೆಗೆ ತೆಗೆದುಕೊಳ್ಳಲಾಗುವುದು ಹಾಗೂ ಯಾವುದೇ ಕಾರಣಕ್ಕೂ ವಾಪಸಾತಿ ಮಾಡಲಾಗುವುದಿಲ್ಲ.

ದಯವಿಟ್ಟು ಗಮನಿಸಿರಿ

ಮೇಲಿನ ನಿಯಮಗಳನ್ನು ಉಲ್ಲಂಘಿಸಿದ ವಿದ್ಯಾರ್ಥಿಗಳನ್ನು ಕೂಡಲೇ ಅಮಾನತ್ತಿನಲ್ಲಿ ಇಡಲಾಗುವುದು. ವಿಚಾರಣೆ ನಡೆಸಿದಾಗ ಅವರ ತಪ್ಪುಗಳು ಸಾಬೀತಾದಲ್ಲಿ ಶಿಸ್ತಿನಕ್ರಮ ತೆಗೆದುಕೊಳ್ಳಲಾಗುವುದು.

ಕಾಲೇಜಿನ ಆವರಣದ ಹೊರಗಡೆ ವಿದ್ಯಾರ್ಥಿಗಳ ನಡವಳಿಕೆಗಳಿಗೆ ನಾವು ಜವಾಬ್ದಾರರಲ್ಲದಿದ್ದರೂ, ಅಂತಹ ಅಶಿಸ್ತಿನ ನಡವಳಿಕೆಯನ್ನು ಗಣನೆಗೆ ತೆಗೆದುಕೊಳ್ಳಲಾಗುವುದು.

Food is an important part of balanced diet – Fran Lebowitz.

JULY



2016

| | |
|--------|------------------------------------|
| 1 Fri | College Re-opens |
| 2 Sat | |
| 3 Sun | |
| 4 Mon | |
| 5 Tue | |
| 6 Wed | |
| 7 Thu* | Ramzan Id / Eid-ul_Pitar - Holiday |
| 8 Fri | |
| 9 Sat | |
| 10 Sun | |
| 11 Mon | |
| 12 Tue | |
| 13 Wed | |
| 14 Thu | |
| 15 Fri | |
| 16 Sat | |

The earth is art, the photographer is only a witness - Yann Arthus - Bertrand.

JULY



2016

| | |
|--------|--|
| 17 Sun | |
| 18 Mon | |
| 19 Tue | |
| 20 Wed | |
| 21 Thu | |
| 22 Fri | |
| 23 Sat | |
| 24 Sun | |
| 25 Mon | |
| 26 Tue | |
| 27 Wed | |
| 28 Thu | |
| 29 Fri | |
| 30 Sat | |
| 31 Sun | |

Taking pictures is savouring life intensely, every 100th of a second - Marc Robouv

AUGUST



2016

| | |
|---------|------------------------------------|
| 1 Mon | |
| 2 Tue | |
| 3 Wed | |
| 4 Thu | |
| 5 Fri | |
| 6 Sat | |
| 7 Sun | |
| 8 Mon | |
| 9 Tue | |
| 10 Wed | |
| 11 Thu* | St. Philomena's Feast- Holiday |
| 12 Fri* | Varamahalakshmi Festival - Holiday |
| 13 Sat | |
| 14 Sun | |
| 15 Mon | Independence Day |
| 16 Tue | |

You don't take a photograph, you make it - Ansel Adams

- 22 -

AUGUST



2016

| | |
|--------|-----------------------|
| 17 Wed | |
| 18 Thu | |
| 19 Fri | |
| 20 Sat | |
| 21 Sun | |
| 22 Mon | |
| 23 Tue | |
| 24 Wed | |
| 25 Thu | |
| 26 Fri | IA Test Begins for UG |
| 27 Sat | |
| 28 Sun | |
| 29 Mon | |
| 30 Tue | |
| 31 Wed | |

The sunflower is mine in a way - Vincent van Gogh

- 23 -



| | | |
|----|------|--|
| 1 | Thu | |
| 2 | Fri | |
| 3 | Sat | |
| 4 | Sun | |
| 5 | Mon* | Ganesh Chaturthi / Teacher's Day - Holiday |
| 6 | Tue | |
| 7 | Wed | |
| 8 | Thu* | Nativity of Blessed Virgin Mary- Holiday |
| 9 | Fri | |
| 10 | Sat | |
| 11 | Sun | |
| 12 | Mon* | Bakrid / Eid-ul-Adha - Holiday |
| 13 | Tue | |
| 14 | Wed | |
| 15 | Thu | |
| 16 | Fri | |

We are Indians, firstly and lastly - B.R. Ambedkar



| | | |
|----|------|---|
| 17 | Sat | |
| 18 | Sun | |
| 19 | Mon | |
| 20 | Tue | |
| 21 | Wed | |
| 22 | Thu | |
| 23 | Fri | Commencement of Supplementary Exams for IV Sem. |
| 24 | Sat | |
| 25 | Sun | |
| 26 | Mon | |
| 27 | Tue | |
| 28 | Wed | |
| 29 | Thu | |
| 30 | Fri* | Mahalaya Amavasya - Holiday |

The highest result of education is tolerance - Helen Keller

OCTOBER**2016**

| | |
|---------|---|
| 1 Sat | Commencement of Supplementary Exams for VI Sem. |
| 2 Sun | Gandhi Jayanti |
| 3 Mon | |
| 4 Tue | |
| 5 Wed | |
| 6 Thu | |
| 7 Fri | |
| 8 Sat | |
| 9 Sun | |
| 10 Mon* | Ayudha Pooja - Holiday |
| 11 Tue* | Vijayadashami - Holiday |
| 12 Wed* | Muharram / Ashura - Holiday |
| 13 Thu | |
| 14 Fri | |
| 15 Sat* | Maharishi Valmiki Jayanti - Holiday |
| 16 Sun | |

Culture is the widening of the mind and of the spirit - Jawaharlal Nehru

OCTOBER**2016**

| | |
|---------|-----------------------------------|
| 17 Mon | |
| 18 Tue | |
| 19 Wed | |
| 20 Thu | |
| 21 Fri | |
| 22 Sat | |
| 23 Sun | |
| 24 Mon | |
| 25 Tue | |
| 26 Wed | |
| 27 Thu | |
| 28 Fri | |
| 29 Sat* | Naraka Chaturdasi - Holiday |
| 30 Sun | |
| 31 Mon* | Balipadyami / Deepavali - Holiday |

Contentment is the only real wealth - Alfred Nobel

NOVEMBER



2016

| | |
|--------|---|
| 1 Tue* | Kannada Rajyothsava - Holiday |
| 2 Wed | Commencement of Odd Semester Exams I, III & V Regular & Supplementary |
| 3 Thu | Commencement of Supplementary Exams for II Sem. |
| 4 Fri | |
| 5 Sat | |
| 6 Sun | |
| 7 Mon | |
| 8 Tue | |
| 9 Wed | |
| 10 Thu | |
| 11 Fri | |
| 12 Sat | |
| 13 Sun | |
| 14 Mon | |
| 15 Tue | |
| 16 Wed | |

In science, we must be interested in things not in persons – Marie Curie.

NOVEMBER



2016

| | |
|---------|-------------------------------|
| 17 Thu* | Kanakadasa Jayanthi - Holiday |
| 18 Fri | |
| 19 Sat | |
| 20 Sun | |
| 21 Mon | |
| 22 Tue | |
| 23 Wed | |
| 24 Thu | |
| 25 Fri | |
| 26 Sat | |
| 27 Sun | |
| 28 Mon | |
| 29 Tue | |
| 30 Wed | |

Be less curious about people and more curious about ideas – Marie Curie.

DECEMBER



2016

| | |
|---------|-------------------------------------|
| 1 Thu | |
| 2 Fri | |
| 3 Sat | |
| 4 Sun | |
| 5 Mon | Classes commences for Even Semester |
| 6 Tue | |
| 7 Wed | |
| 8 Thu | |
| 9 Fri | |
| 10 Sat | |
| 11 Sun | |
| 12 Mon* | Id-E-Milad-Holiday |
| 13 Tue | |
| 14 Wed | |
| 15 Thu | |
| 16 Fri | |

Adopt the pace of nature : her secret is patience : Ralph Waldo Emerson.

DECEMBER



2016

| | |
|---------|-------------------------|
| 17 Sat | |
| 18 Sun | |
| 19 Mon | |
| 20 Tue | |
| 21 Wed | |
| 22 Thu | |
| 23 Fri | |
| 24 Sat* | Christmas Eve - Holiday |
| 25 Sun | Christmas Day |
| 26 Mon | |
| 27 Tue | |
| 28 Wed | |
| 29 Thu | |
| 30 Fri | |
| 31 Sat | |

He who loves not his country, can love nothing - Lord Bryan.

JANUARY



2017

| | |
|---------|----------------------------|
| 1 Sun | New Year |
| 2 Mon | |
| 3 Tue | |
| 4 Wed | |
| 5 Thu | |
| 6 Fri | |
| 7 Sat | |
| 8 Sun | |
| 9 Mon | |
| 10 Tue | |
| 11 Wed | |
| 12 Thu | |
| 13 Fri | |
| 14 Sat* | Makara Sankranti - Holiday |
| 15 Sun | |
| 16 Mon | |

Evil unchecked grows, evil tolerated poisons the whole system - Nehru

JANUARY



2017

| | |
|---------|--------------|
| 17 Tue | |
| 18 Wed | |
| 19 Thu | |
| 20 Fri | |
| 21 Sat | |
| 22 Sun | |
| 23 Mon | |
| 24 Tue | |
| 25 Wed | |
| 26 Thu* | Republic Day |
| 27 Fri | |
| 28 Sat | |
| 29 Sun | |
| 30 Mon | |
| 31 Tue | |

A man can be destroyed, but not defeated - Ernest Hemingway.

FEBRUARY



2017

| | |
|--------|--------------------------|
| 1 Wed | |
| 2 Thu | |
| 3 Fri | |
| 4 Sat | |
| 5 Sun | |
| 6 Mon | IA Test Commences for UG |
| 7 Tue | |
| 8 Wed | |
| 9 Thu | |
| 10 Fri | |
| 11 Sat | |
| 12 Sun | |
| 13 Mon | |
| 14 Tue | |
| 15 Wed | |
| 16 Thu | |

Experience is the best teacher - Penelope Douglas.

FEBRUARY



2017

| | |
|---------|---------------------------|
| 17 Fri | |
| 18 Sat | |
| 19 Sun | |
| 20 Mon | |
| 21 Tue | |
| 22 Wed | |
| 23 Thu | |
| 24 Fri* | Maha Shivaratri - Holiday |
| 25 Sat | |
| 26 Sun | |
| 27 Mon | |
| 28 Tue | |

The poetry of the earth is never dead - John Keats.

MARCH



2017

| | |
|--------|------------------------|
| 1 Wed | |
| 2 Thu | |
| 3 Fri | |
| 4 Sat | |
| 5 Sun | |
| 6 Mon | |
| 7 Tue | |
| 8 Wed | |
| 9 Thu | |
| 10 Fri | |
| 11 Sat | |
| 12 Sun | |
| 13 Mon | |
| 14 Tue | |
| 15 Wed | Practical Exams Begins |
| 16 Thu | |

He who eats till he is sick, must fast till he is well – Hebrew Proverb.

MARCH



2017

| | |
|---------|---|
| 17 Fri | |
| 18 Sat | |
| 19 Sun | |
| 20 Mon | |
| 21 Tue | |
| 22 Wed | Commencement of Supplementary Exams for III & V Sem. |
| 23 Thu | |
| 24 Fri | |
| 25 Sat | |
| 26 Sun | |
| 27 Mon | |
| 28 Tue* | Ugadi - Holiday |
| 29 Wed | |
| 30 Thu | |
| 31 Fri | |

The eye should learn to listen before it looks – Robert Frank

APRIL



2017

| | |
|---------|--|
| 1 Sat | |
| 2 Sun | |
| 3 Mon | Commencement of Even Semester Exams II, IV & VI Regular & Supplementary |
| 4 Tue | Commencement of Supplementary Exams for I Sem. |
| 5 Wed | |
| 6 Thu | |
| 7 Fri | |
| 8 Sat | |
| 9 Sun | Mahaveer Jayanthi |
| 10 Mon | |
| 11 Tue | |
| 12 Wed | |
| 13 Thu | |
| 14 Fri* | Good Friday / Ambedkar Jayanthi - Holiday |
| 15 Sat | |
| 16 Sun | Easter Sunday |

Defer no time, delays have dangerous ends - William Shakespeare.

APRIL



2017

| | |
|--------|--|
| 17 Mon | |
| 18 Tue | |
| 19 Wed | |
| 20 Thu | |
| 21 Fri | |
| 22 Sat | |
| 23 Sun | |
| 24 Mon | |
| 25 Tue | |
| 26 Wed | |
| 27 Thu | |
| 28 Fri | |
| 29 Sat | |
| 30 Sun | |

Whether it is the best of times or the worst of times, it's the only time we have - Art Buchwald

MAY



2017

| | |
|--------|--|
| 1 Mon* | May Day-Holiday/Summer Holiday Commences |
| 2 Tue | |
| 3 Wed | |
| 4 Thu | |
| 5 Fri | |
| 6 Sat | |
| 7 Sun | |
| 8 Mon | |
| 9 Tue | |
| 10 Wed | |
| 11 Thu | |
| 12 Fri | |
| 13 Sat | |
| 14 Sun | |
| 15 Mon | |
| 16 Tue | |

People are made of flesh and blood and the miracle fibre called courage - Mignan McLaughlin.

MAY



2017

| | |
|--------|--|
| 17 Wed | |
| 18 Thu | |
| 19 Fri | |
| 20 Sat | |
| 21 Sun | |
| 22 Mon | |
| 23 Tue | |
| 24 Wed | |
| 25 Thu | |
| 26 Fri | |
| 27 Sat | |
| 28 Sun | |
| 29 Mon | |
| 30 Tue | |
| 31 Wed | |

Challenges are what make life interesting & overcoming them is what makes life meaningful - Joshua J Marine

JUNE



2017

| | |
|--------|--|
| 1 Thu | College re-opens after Summer Holidays |
| 2 Fri | |
| 3 Sat | |
| 4 Sun | |
| 5 Mon | |
| 6 Tue | |
| 7 Wed | |
| 8 Thu | |
| 9 Fri | |
| 10 Sat | |
| 11 Sun | |
| 12 Mon | |
| 13 Tue | |
| 14 Wed | |
| 15 Thu | |
| 16 Fri | |

If you try & lose then it isn't your fault. But if you don't try and lose, then it's all your fault. Orsan Scott Card, Ender's Game.

JUNE



2017

| | |
|---------|-----------------------|
| 17 Sat | |
| 18 Sun | |
| 19 Mon | |
| 20 Tue | |
| 21 Wed | |
| 22 Thu | |
| 23 Fri | |
| 24 Sat | |
| 25 Sun | |
| 26 Mon* | Eid-ul-Fitr - Holiday |
| 27 Tue | |
| 28 Wed | |
| 29 Thu | |
| 30 Fri | |

Culture is the widening of the mind and of the spirit - Jawaharal Nehru

ST. PHILOMENA'S COLLEGE, MYSORE - 570 015
TIME TABLE 2016-2017

| | I | II | III | IV | V | VI | VII |
|-----|---|----|-----|----|---|----|-----|
| MON | | | | | | | |
| TUE | | | | | | | |
| WED | | | | | | | |
| THU | | | | | | | |
| FRI | | | | | | | |
| SAT | | | | | | | |



I am one of those who think, like Nobel, that humanity will draw more good than evil from new discoveries Marie Curie

NOTES



Remember you are half water, if you can't go through an obstacle, go around it. Water Does - Margret Atwood.



NOTES



SCHOLARSHIPS

General conditions - Regular attendance to classes, good behaviour and consistently good academic performance are the prerequisites for all scholarships. Students who do not pass in second class in all the subjects in the final examination and who fail to put in the required percentage of attendance are not eligible for any scholarships

1. Prof T.R.Balakrishna Merit Scholarship - 1. Highest marks in III B.Sc Zoology.
2. Rev.Fr.Didier Merit Scholarship - 1.Highest marks in III B.A.Sociology.
3. Late Sri.Chayapathi Memorial Merit Scholarship - 1.Highest marks in II Degree Kannada.
4. Late Rev.Fr.N.T.Thomas Memorial Merit Scholarship - 1.Highest marks in II B.A Economics.
5. St.Philomena's College Physics Department Merit Scholarship - 1.Highest marks in II B.Sc Physics.
6. Late Prof.M.A.Khadir Memorial Urdu Merit Scholarship - 2.Highest marks in II B.A. and II B.Com Urdu.
7. St.Philomena's College Botany Department Merit Scholarship - 1.Highest average marks in I and II B.Sc Botany.
8. Late Sri.William Menezes Memorial need Scholarship - 2. To be awarded to one girl student and one boy student - need cum merit.
9. Mrs.Usha Appaiah French Scholarship to be awarded to a student who scores highest marks in II Degree French.
10. Smt.Hemalatha Rao Memorial Merit cum need Scholarship to one girl student.
11. Rt.Rev.Dr.Thomas Vazhapally Bishop of Mysore Scholarship - for 3 meritorious needy students.
12. Smt. Lakshmi Bai & Sri.K.Gopal Rao Memorial Merit cum need Scholarship
13. Smt. Chandravathamma & Prof.K.Narayana Rao Merit Cum need Scholarship - 1.Highest marks in III B.Sc.Chemistry and non-recipient of any other scholarships.
14. Catholic Syrian Bank (Mysore Branch) Merit Scholarship - 1. Highest marks in II Semester B.Com Accountancy.
15. Late Prof.E.N.K.Vishwanath Memorial Merit Scholarship - 1.Highest marks in III B.Sc. Mathematics.
16. Prof.M.C.Prabha Merit Scholarship - 1.Highest marks in I B.A.History
17. Late.Smt. Jayalakshmi Musale Narayan Rao Memorial Merit Scholarship - 1. Highest marks in I Degree Hindi whose mother tongue is not Hindi.
18. Late.Sri.G.Subramanyan & late Smt.Sharadamma Memorial Merit cum need Scholarship - 1.
19. Smt. Sharadha Varadarajan Merit Scholarships - 2 (In the name of Lord Guruvayoor Sri.Krishna) Highest marks in II Degree Social Work and II Degree Journalism.
20. Sri. Abdul Gaffar Merit Scholarship - 1.Highest total in II B.A.

He who eats till he is sick, must fast till he is well - Hebrew Proverb.

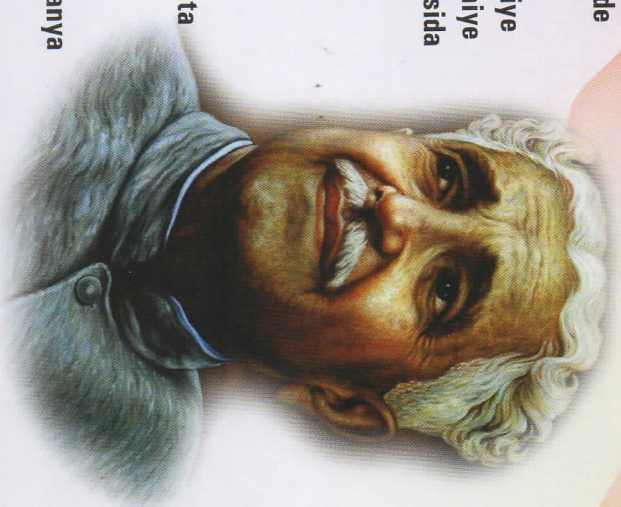
"The tragedy in life doesn't lie in not reaching your goal, the tragedy lies in Having no goal to reach" Benjamin Mays.



21. Sri.Sandeep Appaiah Merit Scholarship - 1. (To one needy student).
22. Late Prof.Ramadas Pai Memorial Merit Scholarship awarded for highest marks in I Degree English.
23. Late Sri. Seetha Rama Rao Memorial Merit Scholarship- 1.Highest marks in IIdegree English.
24. Sri Syed Mustafa Urdu Merit Scholarship -1.Highest marks in I Degree Urdu.
25. Late Smt.Shiksha Devi Memorial Need based Scholarship -1.to be awarded to a deserving lady student.
26. Sri.C.R.Lingaiah Merit Scholarship -1.Highest marks in II B.Com Economics
27. Dr.C.Balakrishnan Nair Merit Scholarship -1. Highest marks in II B.Sc Zoology.
28. Dr.V.Subramanyan Merit Scholarship -2. Highest marks in I and II B.Sc Bio-Chemistry.
29. Smt.K.C.Sunanda Devi Merit Scholarship - 1.-For a girl student securing highest marks in II B.Sc PCM.
30. Smt.Anusuya Bai Pavanje Merit Scholarship - 1. Highest average marks in I and II Degree Functional English.
31. Prof.M.C.Prabha Merit Scholarship -1. Highest marks in II Degree History.
32. Rev.Fr.Leslie Moras Principal Merit Scholarship -1. Highest marks in III Degree History.
33. Dr.H.N.Suhra Rao Merit Scholarship -3. Highest marks in I, II and III Degree Chemistry.
34. Smt.Leela Solomon Merit Scholarship -1. Highest marks in III Degree Secretarial Practice.
35. Late Prof.M.S.Nagaraj Memorial Scholarship -1.Highest marks in II Degree General English.
36. Dr.Gerry Pais and Family Endowment Scholarship - 1. To one needy student.
37. Prof.M.C.Prabha Merit Scholarship -1. Highest marks in I Degree BBM Language Hindi.
38. Prof.M.C.Prabha Merit Scholarship -1. Highest marks in II Degree, BBM Language Hindi.
39. Sri.Vasudeva Need based Scholarship -2.Needy students (PCM and CBZ).
40. Smt.Sufiya Bi Merit Scholarship -1.Highest marks in I and II B.Sc Microbiology.
41. Smt.Ramesh Babu Scholarship- To be awarded to deserving students.
42. Rt.Rev.Bishop Mathias Fernandes Memorial Prof.Abraham Somprakash Scholarship - Need cum merit for Commerce students - 3.
43. Sr.T.Tianboochetty Merit Prize-3.Highest in B.A, B.Sc and Masters Degree.
44. Late Shivanra Memorial Scholarship -1.Highest marks in I Degree B.Sc Maths.
45. Prof.Maria A Lazarus Merit cum Need Scholarship -1.Highest marks in I Degree B.Sc Botany.
46. Dr.B.Balachandra Rao Memorial Merit Scholarship -1.Highest marks in I Degree BA Economics.
47. Mr.Rajeeva Loachana Sports Scholarship for deserving sports person.
48. Rev. Fr. Leslie Moras Endowment Fund by Amos Joshua Prakash- Need cum Merit Scholarship.

Getting into debt, is getting into a tangle, same net – Franklin.

KARNATAKA STATE ANTHEM



Jai Bharata jananiya tanujaate
 Jaya he karnataka mate
 Jaya sundara nadi vanagala naade
 Jaya he rasa rushigala beede.

Bhoodeviya makutada nava maniye
 Gandhada chandada honnina ganiye
 Raghava madhusudhanaravatarisida
 Bharata jananiya tanujaathe

Jananiya jogula vedada ghosha,
 Jananige jeevavu ninnavesha
 Hasurina girigala saale,
 Nimaya koraina maale
 Kapila patanjala gautama jinanuta
 Bharata jananiya tanujaathe

Shankara ramaniya vidyaranya
 Basaveshvara madhvara divyaranya
 Ranna shadakshara ponna
 Pampa lakumipati janna
 Kumaravyasara mangala dhaama
 Kavi kogilegala punyaraama
 Manaka raamananda kabirara
 Bharata jananiya tanujaathe

Tailapa hoysalaraalida naade
 Dankana jakanara nechchina beede
 Krishna sharavati tunga
 Kaveriya vara ranga
 Chaitanya paramahamsa vivekara
 Bharata jananiya tanujaathe

Sarvajanaangada shantiya tota
 Rasikara kangala seleyuva nota
 Hindu chraista musalmaana
 Paarasika jainarudyaana

Janakana holuva doregala dhaama
 Gaayaka vainikararaama
 Kannada nudi kunidaaduva geha
 Kannada taayiya makkala deha

Jai Bharata jananiya tanujaate
 Jaya he karnataka maathe
 Jaya sundara nadi vanagala naade
 Jaya he rasa rushigala beede
 Jai Bharata jananiya tanujaate
 Jaya he karnataka maathe



ST. PHILOMENA'S COLLEGE (Autonomous)

A College of Excellence (UGC)

Bannimantap, Mysore - 570 015

Tel : 0821-4240900, 4240912, 4240954, 4240951 Fax : 091.821.4240950

Email : stphilos1946@gmail.com Web: www.stphilos.in

Good Touch, Mys. Ph: 4262722



College of Excellence

Re-accredited by NAAC with 3.28 CGPA ("A" Grade-Very Good)

Autonomous College of the University of Mysore

St. Philomena's College (Autonomous)

Mysore Diocesan Educational Society (Kegb.)